



# SWL.

Retail Space to Let in  
Exeter, Devon

MCCOYS ARCADE

[www.swlandltd.co.uk](http://www.swlandltd.co.uk)



## Retail Space to Let in Fore Street

Large, open retail units situated on Fore Street, near the junction with Bartholomew Street and West Street.

### Location

Situated in the heart of Exeter's independent commercial quarter, 134 Fore St is conveniently close to the M5 motorway and within walking distance of St David's, Central Stations, and Exeter bus station, our location is ideal for access to city centre car parks, shops, and public transport services.

### Rateable Value

Currently under assessment

### VAT

VAT is not payable on any rents or service charges

### Rent Deposits

A rent deposit may be required from prospective tenants.

# SWL.



## 134 Fore St Lower Ground Floor

Large, open retail unit situated on Fore Street, near the junction with Bartholomew Street and West Street. A well-known spot in the heart of Exeter's independent shopping quarter. Outside steps included. Toilet and changing rooms recently built within the unit with new contemporary lighting and rewire. There is also potential for remodelling the internal layout to suit a diverse range of retail purposes. We are offering the unit on a fully repairing and insuring lease.

## Property Features:

- **Use: Retail**
- **Size: 92.25 m2 (1011 ft2)**
- **Rent: £11,000 per year**

BED HEAD  
TIGI  
TIGI copyright  
@colour  
REVLON  
PROFESSIONAL

BED HEAD  
TIGI  
TIGI copyright  
@colour  
REVLON  
PROFESSIONAL

EXETER • FALMOUTH • PENZANCE

Facebook icon @ #sessionsurfnskateexeter  
Phone icon 01392 696123

# SESSIONS

SURF & SKATE SHOP



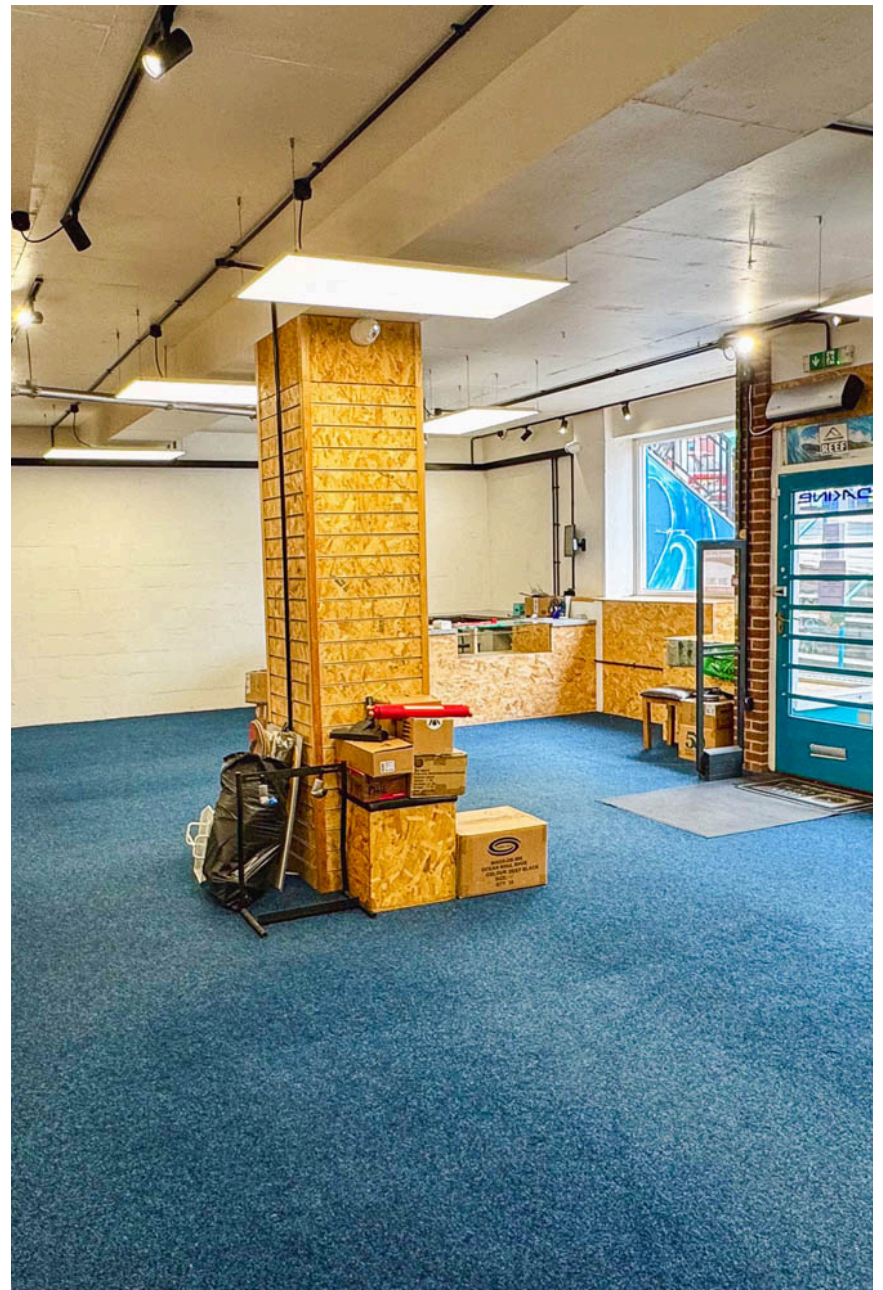
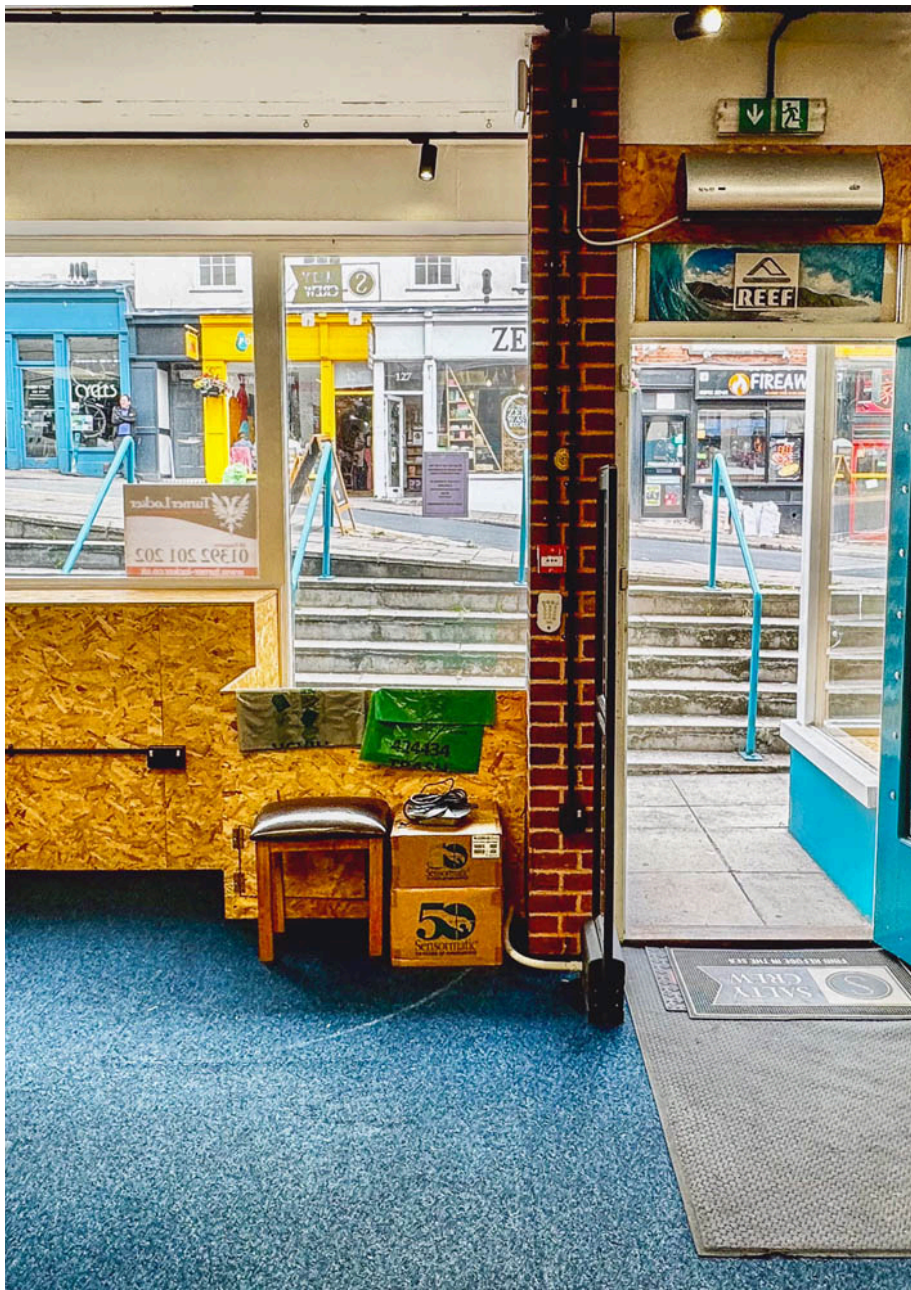
Alder



SALTY CREW

Turner Locker  
01392 201 202







# SWL.



136 Fore St

Retail unit situated on Fore Street, near the junction with Bartholomew Street and West Street. A well-known spot in the heart of Exeter's independent shopping quarter. Currently comprised of 2 main rooms, with additional toilet and store cupboard to the rear of the unit. Excellent glass frontage – will suit a variety of retail uses.

## Property Features:

- **Use: Retail**
- **Size: 421 ft<sup>2</sup>**
- **Rent: £9,600 per year**

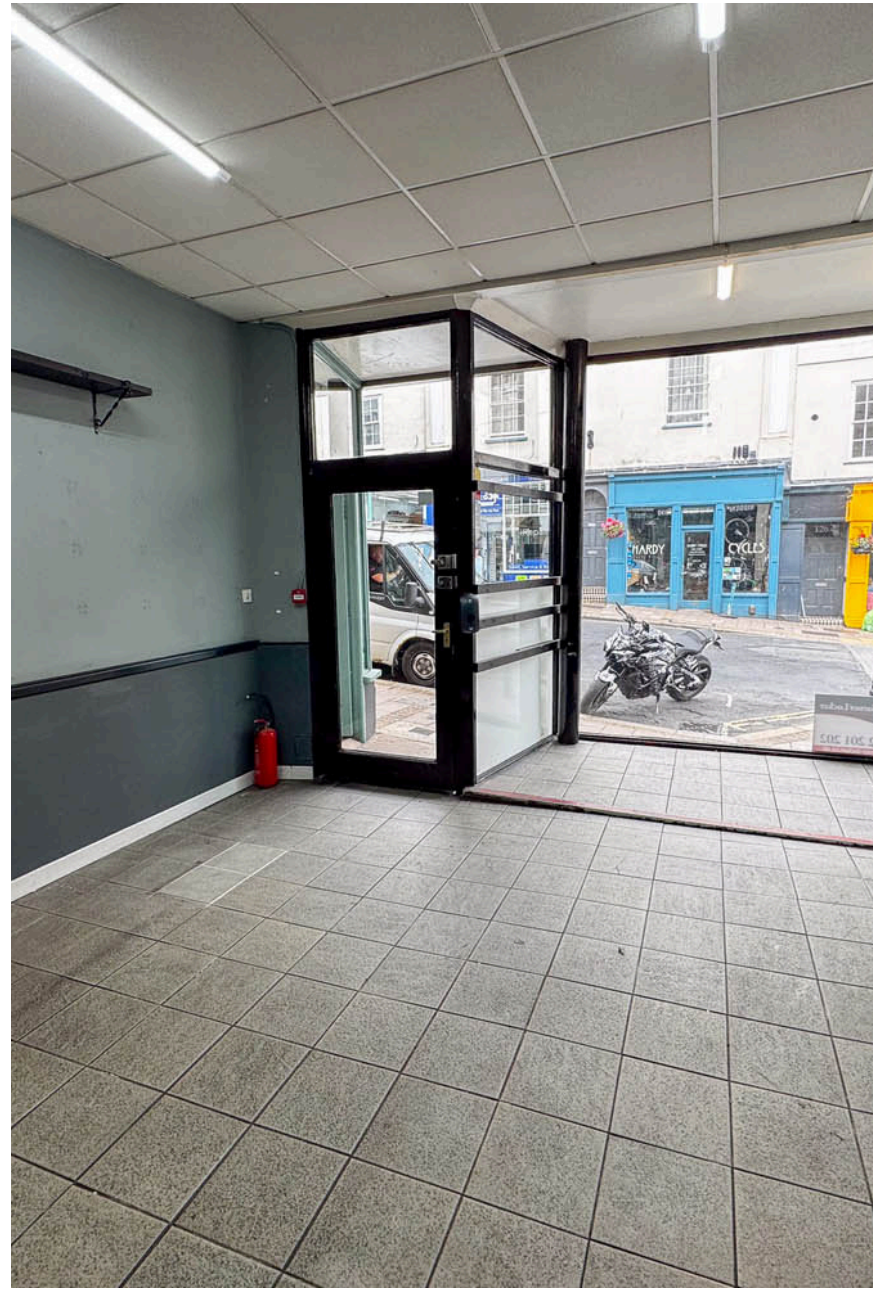
# HIDDEN JEWEL TATTOO STUDIO

Wine Cider Cheese

 Turner Locker  
All enquiries  
**01392 201 202**  
[www.turner-locker.co.uk](http://www.turner-locker.co.uk)

LIBERTÉ  
ÉGALITÉ  
AVANTGÔTÉ





## About South West Land

South West Land is a family-run property company, established in 1986 and based in Exeter, Devon. They own a diverse portfolio of flats, houses, shops, offices, and industrial spaces across Devon and Cornwall.

We manage and let our properties in-house, ensuring they are well-maintained and available to a variety of small to medium-sized businesses and private lessees. We take pride in strong relationships with our tenants through fair rents and professional ongoing management.





# SWL.

For further information, please contact:

South West Land, Foundry 17, McCoy's Arcade, Fore St, Exeter EX4 3AN  
01392 270877  
[clare@swlandltd.co.uk](mailto:clare@swlandltd.co.uk)